

# PRODUCT INFORMATION PACKET



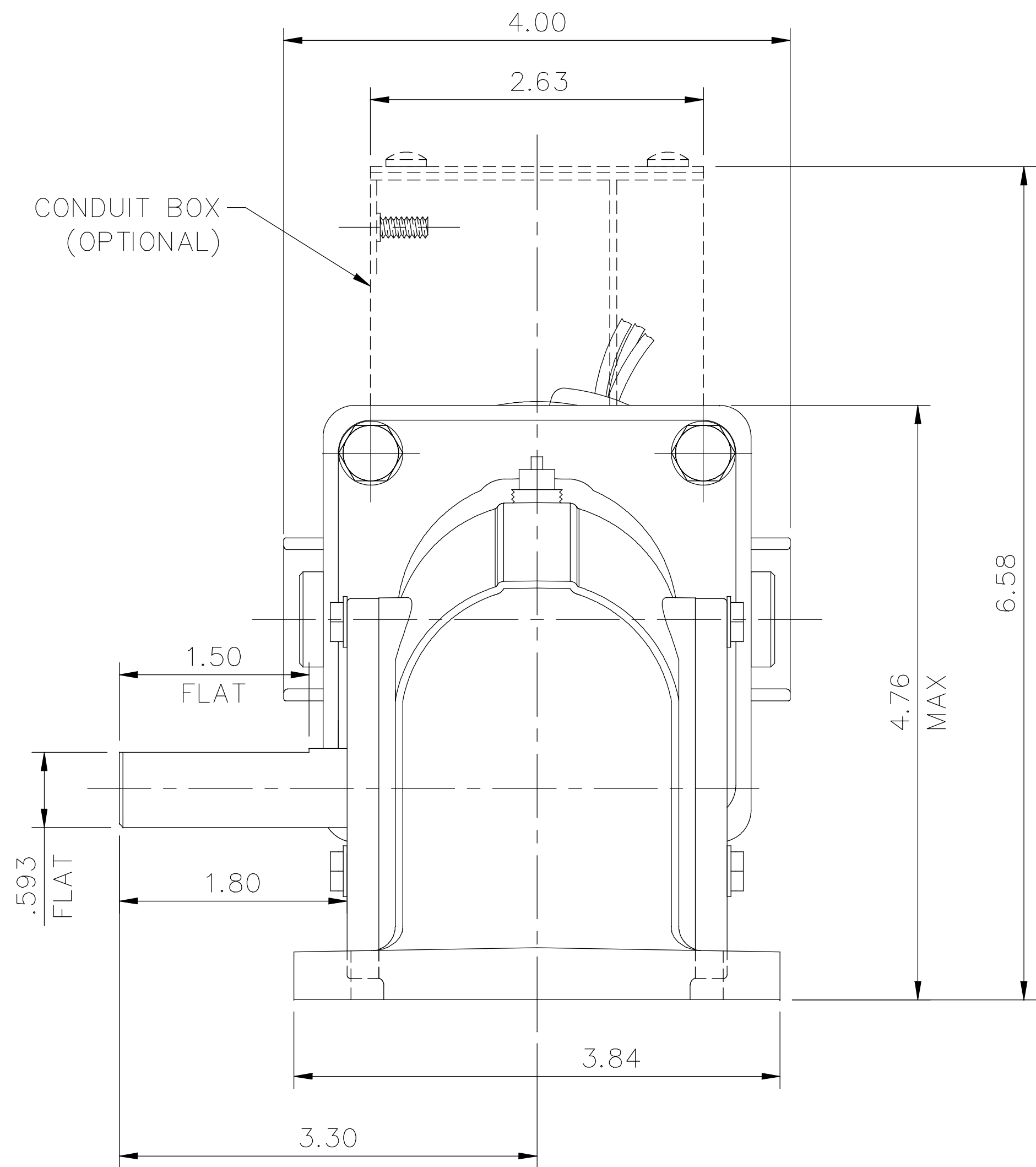
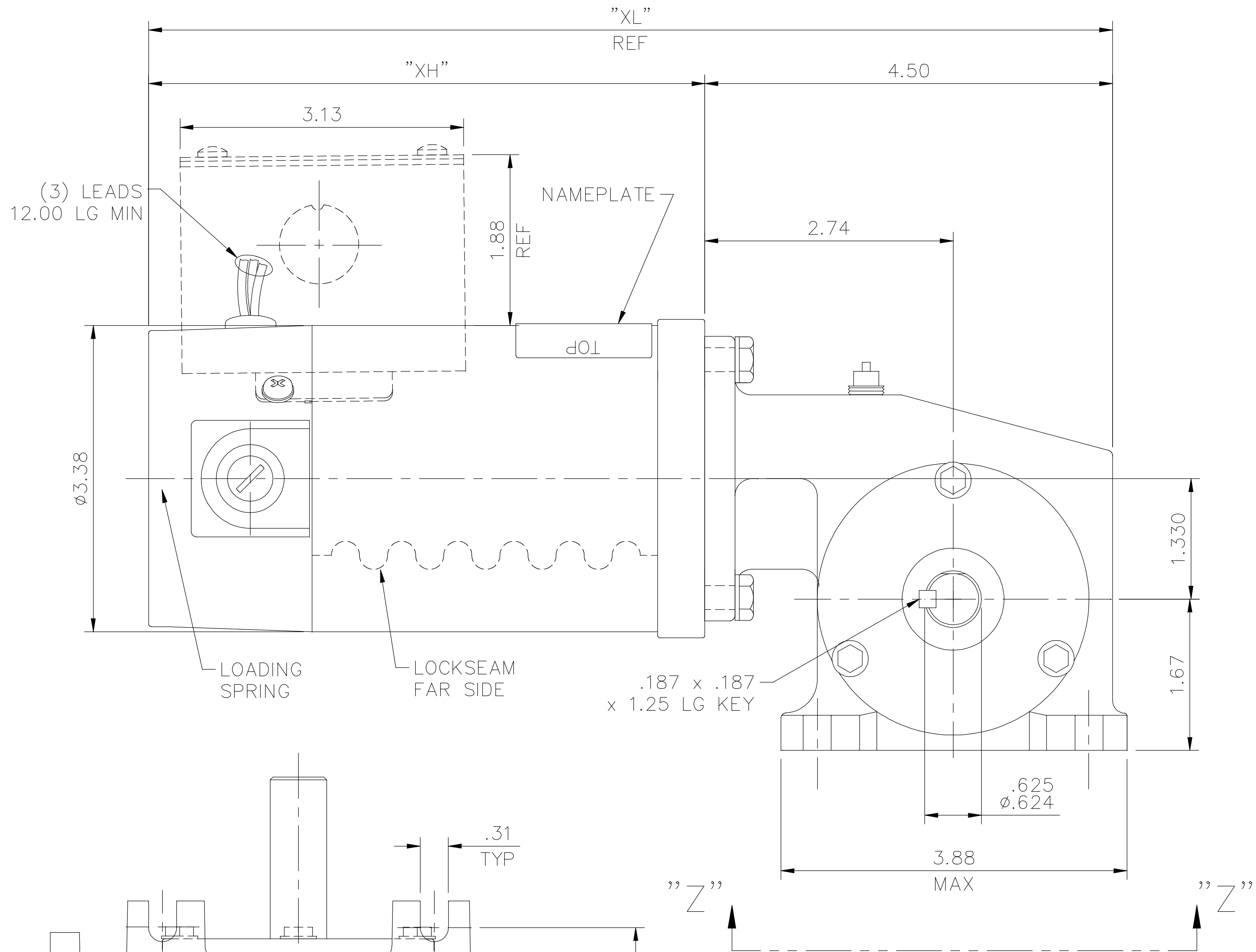
Model No: M1135042.00  
Catalog No: M1135042.00  
Right Angle Gearmotor, 0.25 HP, 90 V, 62 RPM, 34 Frame, TENV



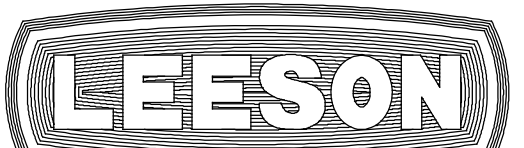
Regal and Leeson are trademarks of Regal Rexnord Corporation or one of its affiliated companies.  
©2022 Regal Rexnord Corporation, All Rights Reserved. MC017097E



M1030350



CATALOG NUMBER	SPEED RANGE RPM	FULL LOAD TORQUE LB.-IN.	INPUT HP	OVERHUNG LOAD LBS.	GEARMOTOR TYPE & FRAME	RATIO TO 1	"XH"	"XL"
M1135046.00	500-8	30	1/4	235	13F05-34G	5	8.14	12.64
M1135045.00	250-4	50	1/4	235	13F10-34G	10	8.14	12.64
M1135044.00	125-2.1	90	1/4	235	13F20-34G	20	8.14	12.64
M1135043.00	83-1.4	125	1/4	235	13F30-34G	30	8.14	12.64
M1135042.00	62-1	135	1/4	235	13F40-34G	40	8.14	12.64

				TOLERANCES UNLESS SPECIFIED		 ELECTRIC MOTORS GEARMOTORS AND DRIVES			DRAWN DWF 11/30/93		
				DEC.	INCHES				CHK		
				.X	±.1				APPD		
				.XX	±.03	TITLE OUTLINE 34 FRAME DC 13 SERIES 90V GEARMOTOR			SCALE 5=8		
				.XXX	±.005				REF M1135049.99		
Y	REMOVED 1/8 HP RATINGS FROM TABLE, ECO-0173505	IPG 9/13/19		.XXXX	±.0005	MAT'L.			FMF M1135046.00		
NO.	REVISION	BY & DATE	CHK	ANG	±1/2"	FINISH LEESON			PREV		
THIS DRAWING IN DESIGN AND DETAIL IS OUR PROPERTY AND MUST NOT BE USED EXCEPT IN CONNECTION WITH OUR WORK ALL RIGHTS OF DESIGN AND INVENTION ARE RESERVED THIS IS AN ELECTRONICALLY GENERATED DOCUMENT – DO NOT SCALE THIS PRINT			RFP		CAD FILE M1030350			SIZE	DRAWING NO.		REV.
			DIST					B	M1030350		Y